

# *User Guide*



**Note: Please recharge the player before using it!**

# For Your Safety

Read this user guide carefully to ensure proper use of the product and to avoid any danger or physical damage.

- ❖ Please use your player properly in case of explosion, fire, electric shock, etc.
  1. Do not repair the player by yourself, or it will cause damage.
  2. Do avoid getting the player wet or drop it in water.
  3. Do not use the player while raining.
  4. As U-disk, it will be write-protected if you switch the **【HOLD ▶】** button to “Lock” position.
  5. Please backup important data onto your personal computer as repair or other causes may result in data loss.
  
- ❖ When using your MP4 player, pay attention to your health, especially the power of hearing.
  1. Do not use the earphones while driving or riding a bicycle.
  2. It may cause traffic accident if you turn up the volume of the earphones while walking down the street.
  3. Do not turn up the volume too high, doctors warn against prolonged exposure to high volume.
  4. Stop using the device or turn down the volume if you have ringing in your ears.
  5. Always use the accessories provided by or approved by our company, also do not spray water on the player.

## Function features

- ◆ The player supports MP3 and WMA music file formats. Including WMA files with DRM (Digital Rights Management) function.
- ◆ Support USB 2.0 capability, much faster than USB 1.1, to enable faster communication with your PC.
- ◆ The player can record outside voice and FM radio.
- ◆ The player has repeat functions.
- ◆ The player has Video Playback, Photo Viewer, E-book, Slide show, FM transmitter functions, etc.
- ◆ The player can power off automatically after a preset time.

## Accessories



**Installation CD**



**USB Cable**

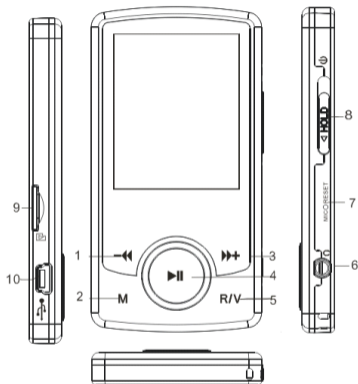


**Earphones**



**User Guide**

## Components and button function



1. Previous Track/Backward/  
Volume down
2. MENU button
3. Next track/Forward /Volume  
up
4. Play/Pause/Confirm
5. Record/Volume control
6. Earphone jack
7. Microphone/Reset hole
8. Power/HOLD switch
9. Micro SD/T-flash card slot
10. USB port

## Charging Li –polymer battery safely

1. Connect the PC USB port and the MP3 USB port with the provided USB cable.
2. The power sign is shown dynamic when charging, once full charged, the power sign will stop moving, power is full, please shut off the power. The charging time is approximately 3 hours.
3. The unit could not be used during charge.
4. To stop recharging, disconnect the USB cable.

## Notes

- Before your first time use, please recharge your player.
- Your computer must be turned on while connected to your player for charging.
- Do not overcharge your player, or it may shorten the battery's life.

## CAUTION

1. Danger of explosion if battery is incorrectly replaced. Replace only with the same or equivalent type.
2. Do not disassemble, crush, short-circuit or incinerate your battery as it may cause fire, injury, burns, or other hazards.

## Basic operations

### Turn power on and play music

1. Connect earphone to earphone jack.
2. Switch **HOLD** ► button to unlock position
3. Slide and hold the **HOLD** ► button in the opposite direction of the arrow to turn power on and enter main menu interface (the default is "MUSIC" mode).
4. Short press **▶||** button to enter music menu.
5. To return main menu: Press and hold **M** button.

To Pause/Play: Short press **▶||** button.


To change tracks: Short press **【▶▶+/-◀◀】** button.

To turn unit off: Slide and hold the **【HOLD ▶】** button in the opposite direction of the arrow.

#### **NOTE:**

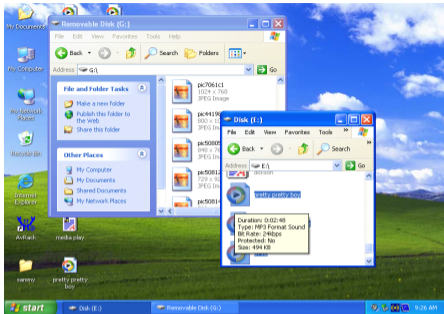
1. Please reset your player by pressing the RESET hole while failing to power on or hanging up in power on mode.
2. Please use the Micro SD/T-FLASH card correctly in case of happening anything wrong, do not insert or pull out the card while power on.

#### **Volume Adjustment:**

In audio or video files playback, or FM tuner mode, short press **【R/V】** button to pitch on the volume icon , then press **【▶▶+/-◀◀】** button to turn up/down volume.


**Adding/Removing files/Folders** – you can use the player as a removable USB storage.

1. Connect the PC USB port and the player USB port with the provided USB cable.
2. Add files/folders to the USB storage's folder.
  - I . Open files/folders to transfer from your computer.
  - II . Open My Computer → Removable Disk from the desktop.
  - III . Select the files/folders to transfer from your computer and draw and put them to a folder of your choice in the Removable Disk (you also can transfer files on your PC to the player using the "Copy" and "Paste" functions).



3. Delete files from the removable USB storage (use the "Delete" command).

**Remove the player from PC** – please follow the steps in case of damaging the player or data loss.

1. Click the left mouse button on the  icon that is on the taskbar at the bottom right corner of the desktop.
2. Click the "Safely remove USB Mass storage Device – Drive (X:)" column.
3. Disconnect the player from your computer.

## CAUTION:

1. Do not remove the player while files within the USB Mass Storage are being played on your computer.
2. Do not disconnect the player from your computer or press **M** / **▶||** while transferring files, or it will cause damage to the player or data loss.

## Menu Navigation

**M** button: Enter main menu, submenu or return.

Skip button **▶+/-◀** : Shift menus.

Play/Pause button **▶||** : Play, Pause, or confirm.

1. Press and hold **M** button to enter main menu.
2. Press **▶+/-◀** buttons to select your desired option (e.g. MUSIC, FILE, VOICE, PHOTO, FM, SETUP, VIDEO, EBOOK, FM Tx.).

## MUSIC

Slide and hold the **HOLD ▶** button in the opposite direction of the arrow to turn power on and enter main menu (the default menu is “MUSIC” mode). then short press **▶||** button to enter music menu.

## Music Playback Submenu

Short press **▶||** button to enter into submenu and short press **▶+/-◀** buttons to select your desired mode (e.g. Repeat, Equalizer, 3D, A-B, Play Rate, File, Classified, Play List, Slide Show).

### *Repeat*

1. Select Repeat mode and short press **▶||** button to enter.



2. Short press 【▶+/-◀】 buttons to select your desired option (e.g. No Repeat, Repeat One, Repeat All, RandomAll, Folder normal, Folder Repeat, Folder Random)
3. Short press 【▶||】 button to confirm.

### Equalizer

1. Select Equalizer mode and short press 【▶||】 button to enter.
2. Short press 【▶+/-◀】 buttons to select your desired option (e.g. Normal, Pop, Rock, Classic, Jazz, Bass, Custom EQ).
3. Short press 【▶||】 button to confirm.

*Custom EQ: you can setup the EQ as your opinion, just need to pitch on the adjustment frame by pressing 【R/V】 buttons and press 【▶+/-◀】 buttons to adjust.*

**NOTE: EQ mode is not obvious when playing WMA format music files.**

### 3D

1. Select 3D mode and short press 【▶||】 button to enter.
2. Short press 【▶+/-◀】 buttons to select your desired option (e.g. Off, On).
3. Short press 【▶||】 button to confirm.

### A-B repeat

1. Select A-B mode and short press 【▶||】 button to select A point,
2. Select A-B mode and short press 【▶||】 button again to start A-B repeat, Select A-B mode and short press 【▶||】 button for the third time to cancel A-B repeat mode.

### Play Rate

1. Select Play Rate mode and short press 【▶||】 button to enter.

2. Short press **【▶+/-◀】** buttons to select your desired speed (e.g. 1.00X, 1.14X, 1.33X, 0.67X, 0.80X).
3. Short press **【▶||】** button to confirm.

**NOTE: If the file is WMA format, it does not support “Play Rate” mode.**

### *File*

1. Select File mode and short press **【▶||】** button to enter.
2. Short press **【▶+/-◀】** buttons to select the music files.
3. Press **【R/V】** button and you can select: “Add to list” or “Delete”.
4. Press **【▶||】** button to confirm.
5. You can select one of the music files and press **【▶||】** button to playback.
6. Press **M** button to return to previous list.

### *Classified*

1. Select Classified mode and short press **【▶||】** button to enter.
2. Short press **【▶+/-◀】** buttons to select “No” or “Yes”.
3. Press **【▶||】** button to confirm.

### **NOTE:**

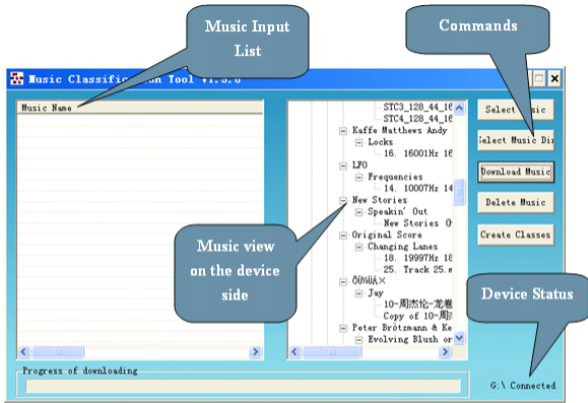
1. It will take longer time to build classify list, or you can press **M** button to cancel the classify process.
2. After classify, the “Classified” menu will appear “Genre”, “Artist”, “Album”, “Title” lists.

You also can use Music Classification AP to download, create or delete music classification database on PC.

NOTE: ClassifyMusic\_V1.5 will download music files into Root\MUSIC folder automatically.

**AP Usage Step:**

1. Connect your player to the PC (Require the PC operating system: Windows 2000, XP, Vista).
2. Put CD disk into the CD driver and open "*ClassifyMusic\_V1.5*" folder.
3. Click "*MusicClassify*" MFC application.



4. Download music files to the player.
  - 1). Click "Select Music" command to input music files (\*.mp3, \*.wma formats).
  - 2). Click "Download Music" command to download selected music into the device and create/refresh music classification database.
5. Click "Delete Music" command to delete music files on the device side and create

/refresh music classification database.

NOTE:

1. The "ClassifyMusic\_V1.5" AP only can classify music files within the internal flash;
2. About the detailed introduction to the Classify Music AP, please refer to: *CD disk*→"ClassifyMusic\_V1.5" folder→"Music\_Classification\_AP" word format file.

*Play List*

Press **【▶||】** button to enter and you can see the play list (My List, \*pla, \*m3u, \*wpl), open one of the play list and select the music files, then you can press **【▶||】** button to playback it.

NOTE:

1. Please build the play list (except \*pla play list) based on the device's music files;
2. You must put the play list files (\*.m3u or \*.wpl) into [Root\PLAYLIST] folder;
3. The music playback will pause for several seconds while open a play list.

*Slide Show*

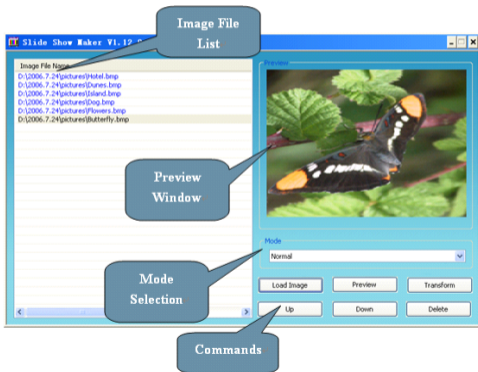
1. Select Slide Show mode and short press **【▶||】** button to enter.
2. Short press **【▶+/-◀◀】** buttons to select the time: Off, 5 Seconds, 10 Seconds, 15 Seconds, 30 Seconds, 60 Seconds
3. Short press **【▶||】** button to confirm, and it will playback slide show file after playback music for the selected time.

*You can use slide show maker AP (open the provided CD and you will see the slide show maker AP) to make slide show files for our portable audio player chip. It transforms many images files into single slide show file. The effect of the slide show is like the window protection program on PC Windows. When a music file is played for a while and end users do not have any actions, the pictures in the slide show file will be displayed*

one by one. Four (Normal, Shutter (Left to Right), Shutter (Top to Down), Circle) modes of the slide show are supported. Different modes show different visual effects.

*NOTE: The player just can playback one slide show file, so put one SLS file into the SLS.DIR folder at one time.*

## Slide Show AP Usage:



## Make Slide Show

### 1. Required System:

Windows 2000, XP, Vista

### 2. AP Operation:

- 1) View of "Image File Name List" – *Show all image input files.*
- 2) View of "Preview Window" – *Show an image file or the effects of the slide show*
- 3) Mode Selection – *Four modes: Normal, Shutter (Left to Right), Shutter (Top to Down), Circle*
- 4) Command of "Load Image" – *Input image files. (\*.jpg, \*.gif, \*.bmp)*
- 5) Command of "Preview" – *Show the effects of the slide show.*
- 6) Command of "Transform" – *Transform all image input files to single slide show file.*
- 7) Command of "Cancel" – *Cancel preview or transformation.*
- 8) Command of "Delete" – *Delete selected image files in the image file name list.*
- 9) Command of "Up" – *Move the selected image file up in the image file name list.*
- 10) Command of "Down" – *Move the selected image file down in the image file name list.*

### 3. AP Usage Step:

- 1) Set configuration files. (Language, Panel Size, Panel Type)

NOTE: You must set the panel size is 220X176.

- 2) Click "Load Image" command to load Images (\*.jpg, \*.gif, \*.bmp)
- 3) Manage Image File Name List (Using the "Delete", "Up", "Down" command)
- 4) Select a mode of the slide show & Preview: Normal, Shutter (Left to Right), Shutter (Top to Bottom), Circle.
- 5) Click "Transform" command to transform the images into SLS file.

NOTE: About the detailed introduction to the slide show AP, please refer to: *CD disk* → "SlideShowMaker\_V1.12.0" folder → "Slide\_Show\_Maker\_AP" word format file.

## FILE

1. In main menu, short press **【▶+/◀】** buttons to select FILE mode.
2. Short press **【▶||】** button to enter.
3. Short press **【▶+/◀】** buttons to choose your desired file(including MTV files, music files, photo files, and record files, etc)
4. Short press **【R/V】** button to enter “Delete” mode, and short press **【▶+/◀】** buttons to select “No” or “Yes”, then short press **【▶||】** button to confirm.
5. Press and hold **M** button to return to main menu.

## VOICE

1. In main menu, short press **【▶+/◀】** buttons to select VOICE mode.
2. Short press **【▶||】** button to enter.
3. Short press **【▶+/◀】** button to choose your desired recorded file.
4. Short press **【▶||】** button to play the recorded file.
5. Press and hold **【R/V】** button to enter record mode.
6. Short press **M** button to save the record file, short press **【▶||】** button to play the recorded file.
7. Whilst in playback mode short press **M** button to enter into submenu (e.g. Repeat, Equalizer, 3D, A-B, Play Rate, File) this part please refer to <music playback submenu>.
8. Press and hold **M** button to return to main menu.



## PHOTO

1. In main menu, short press **【▶+/-◀】** buttons to select PHOTO mode.
2. Short press **【▶|】** button to enter.
3. Short press **【▶+/-◀】** buttons to choose your desired photo file.
4. Hold and press **【R/V】** button to enter “Delete” mode, press **【▶+/-◀】** button to select “No” or “Yes”, then press **【▶|】** button to confirm.
5. Short press **【▶|】** button to scan your desired photo.
6. Short press **【▶|】** button again to browse all photos one by one, or short press **【▶+/-◀】** buttons to scan previous or one next one.
7. Press **M** button to return to PHOTO mode, and press and hold **M** button to return to main menu.

## FM(Optional function)

1. Short press **【▶+/-◀】** buttons to select “FM” mode.
2. Short press **【▶|】** button to enter “FM” mode. Press **【▶|】** button to switch Normal and Preset mode.
3. In “Normal” mode, short press **【▶+/-◀】** button to tune FM frequency between 87.5MHz and 108MHz. (At intervals of 0.1 MHz); Or in “Preset” mode, Press **【▶+/-◀】** button to select the preset stations (Total 30 preset stations).
4. Short press **M** button to enter submenu: Save Preset, Auto Scan.
5. You can press and hold **【R/V】** button to start recording FM stations, and press **M** button to save the FM recorded file.

6. Press and hold **M** button to return to main menu.

## **SETUP**

1. In main menu, short press **▶+/-◀** buttons to select “SETUP” mode.
2. Short press **▶||** button to enter.
3. Short press **▶+/-◀** buttons to choose your desired mode(e.g. USB Mode, Power, Language, Display, Record, Sys Tools, Storage)
4. Short press **▶||** button to confirm.

### **USB Mode**

Short press **▶+/-◀** buttons to select USB Mode (MSC mode or MTP mode)

## **DRM 10(optional function)**

### **What is DRM?**

Stands for digital rights management, a technology used to protect digital products from copyright infringement. When a customer buys a DRM-protected music download, the download is encrypted specifically for that customer. To allow the customer to use the file on a separate music player they must link the DRM enabled player to Windows Media Player 10 and link both applications. This allows the downloaded music file to then be used on a separate digital music player.

### **How to synchronize the DRM songs into your digital player?**

1. Purchase DRM songs from the internet, and download them into your computer.
2. Playback the songs that you downloaded, if it could be played, the download is successful, or you need to download again.

3. To make DRM function, the computer OS must be Windows XP system SP2 or higher version, installed with Windows Media player 10 or above, and have a valid internet connection.
4. Connect the DRM player with your PC, your PC will display:



**NOTE: There are 2 ways to set your digital player into MTP mode.**

- (1) In “USB Mode” select “MTP mode” mode and short press **【▶||】** button to confirm.
- (2) After connecting the player with your PC, press and hold **【▶||】** button for 6 seconds

to switch between “MSC mode”

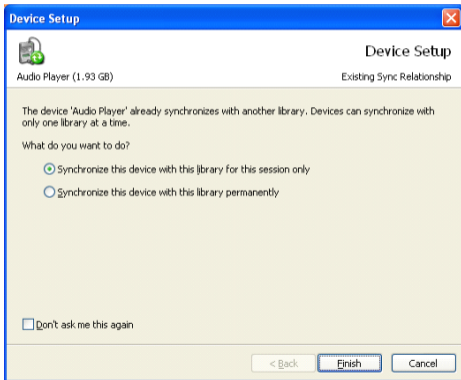


and “MTP (Media Transfer Protocol) mode”

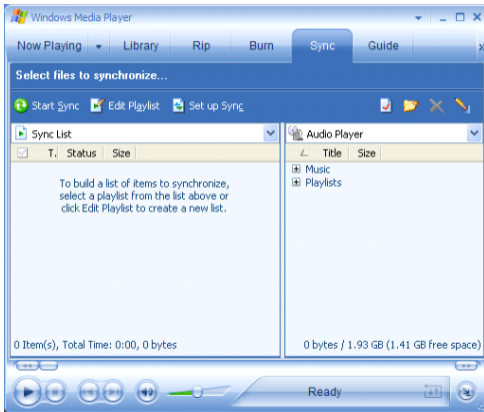


for  
DRM function.

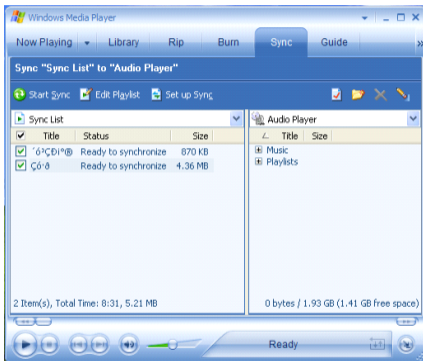
5. Click “OK” to start synchronization, your PC will display:



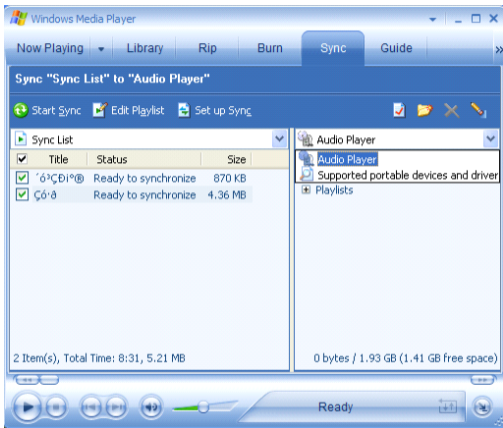
6. Select "Manual" or "Automatic" as your requirement, for example, select "Manual" and click "Finish", it will display:



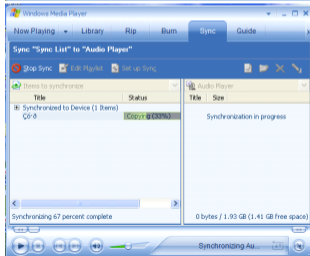
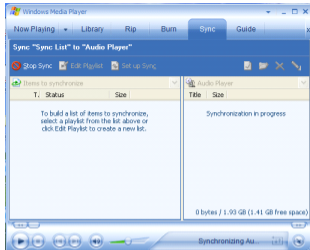
7. Add the songs that you want to synchronize into the sync List.



8. You can select the synchronal media: NAND Flash or Micro SD/T-Flash card, as following picture shows:

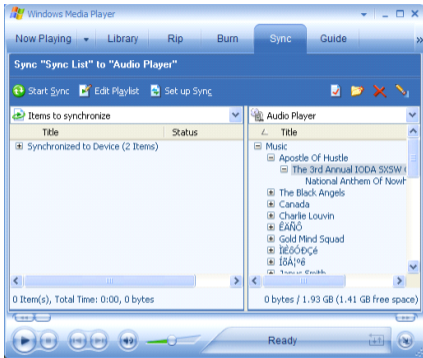


9. Click "Start Sync"





10. The dexter frame will display the synchronized songs.



## Power

1. Short press **【▶▶+/-◀◀】** buttons to enter your desired option (e.g. Auto off, Always on while playing)
2. Select "Auto off" mode and press **【▶▶+/-◀◀】** buttons to setup the auto off time:15 Minutes, 30 Minutes, 60 Minutes, 90 Minutes, 120 Minutes, close.

## Language

Short press **【▶▶+/-◀◀】** buttons to select your desired option (e.g. English, French, German, Italian, Spanish, Portuguese, Polish, Russia, CHI (Simp), CHI (Trad)).

## Display

1. Short press **【▶▶+/-◀◀】** buttons to select "Brightness" or "Screen" menu, then short press **【▶|】** button to enter.
2. Short press **【▶▶+/-◀◀】** buttons to adjust the screen brightness or screen backlight time.

## Record

Short press **【▶▶+/-◀◀】** buttons to select: Quality, VAD, AGC.

## Quality:

Press **【▶▶+/-◀◀】** button to select "Long Time" "Normal Quality" "High Quality" mode.

## VAD and AGC:

Press **【▶▶+/-◀◀】** button to open or close these two function.

## Sys Tools

Press **【▶▶+/-◀◀】** buttons to select: Delete, Format, Reset, Sys info. Refresh, File Sort.

## Delete:

1. Select "Delete" mode and enter, then select the file and press **【R/V】**, then you can press **【▶▶+/-◀◀】** button to select "No" or "Yes".
2. Press **【▶|】** button to confirm.

3. *If you select “Yes”, it will start to delete it.*

*Format:*

*Press **▶+/-◀** button to select “Quick” or “Complete” and press **▶||** button to start format.*

*Reset*

*Select “No” or “Yes” to decide if you will restore the default setting.*

*Sys Info*

*Select “Sys Info” and enter by pressing **▶||** button, then you can see some system information, like: Firmware version, free flash capacity, and TOTAL flash capacity.*

*Refresh:*

1. *Select “Refresh” mode and enter, then press **▶+/-◀** button to select “No” or “Yes”.*

2. *Press **▶||** button to confirm.*

3. *If you select “Yes”, it will start to classify, and you can press **M** button to cancel the classify process.*

*File Sort:*

*Press **▶+/-◀** button to select “Force Sort” or “Auto Sort”.*

*Storage*

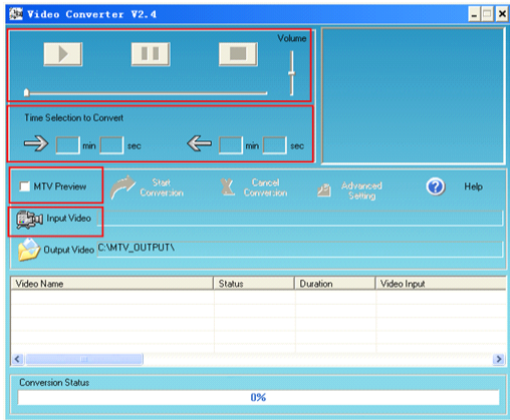
*Short press **▶+/-◀** buttons to select Internal or Micro SD/T-Flash Card, short press **▶||** button to confirm (the LCD will display: Checking...).*

## **VIDEO**

*In order to play video files in this player, you must change the video files into MTV format video files.*

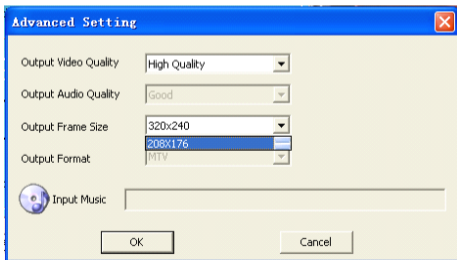
## 1. MTV Video Converter

1. Put CD disk into the CD driver and open "VideoConverter\_V2.9" folder
2. Click "VideoConvert" tool, as following picture shows:

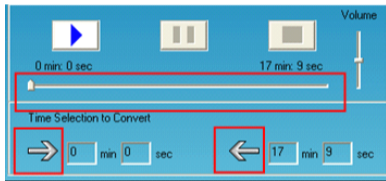


Usage steps for conversion:

1. Click "Input Video" column to select the video file you wish to convert for use on the digital player.
2. Select the "Advanced Setting" and setup the "Output Video Quality" (Include High Quality, Normal Quality, Medium Quality, Low Quality).
3. Select "Output Frame Size" is 208x176.
4. The default "Output Audio Quality" is Good.



5. MTV video converter allows the user to replace the video clip audio track with an audio file of their own choice. To do this, select the “Input Music” button and choose a music file to replace the original background audio of the input video clip. (Go to 6. if you want to keep the original audio of the video input clip.)
6. MTV video converter allows the user to convert a segment of the selected video clip rather than the whole clip. To do this, drag the scroll bar and click the arrowhead on the front of the starting time and the finish time.



### **To convert the whole input video file, go straight to step 7**

To proceed with the conversion process simply deselect the “MTV Preview” checkbox and go to step 7.

7. Click “Start Conversion” button to convert video file.

## **2. Play MTV Video files**

1. In main menu, short press **【▶+/-◀】** buttons to select “VIDEO” mode.

2. Short press **▶|** button to enter.
3. Short press **M** button to enter submenu (e.g. Repeat), Short press **▶|** button to enter Repeat Menu.
4. Short press **▶+/-◀** buttons to select Repeat mode (e.g. No Repeat, Repeat One, Repeat All, RandomAll, DirRepOne, DirRep, DirRanAll), then short press **▶|** button to confirm.
5. Press **R/V** button to enter “Delete” mode, press **▶+/-◀** buttons to select “No” or “Yes”, then press **▶|** button to confirm.
6. Short press **▶|** button to play the MTV file.

## **EBOOK**

1. In main menu, short press **▶+/-◀** buttons to select EBOOK mode.
2. Short press **▶|** button to enter.
3. Short press **▶+/-◀** buttons to choose your desired .TXT file
4. Press **R/V** button to delete the .TXT file, press **▶+/-◀** buttons to select “No” or “Yes”, then press **▶|** button to confirm.
5. Short press **▶|** button to browse your desired file.
6. Short press **▶+/-◀** buttons to scan previous or next page
7. Short press **M** button to return to EBOOK catalog
8. Press and hold **M** button to return to main menu.

**Note: You can use the EBOOK function browse .TXT files.**

## FM Tx. (Optional function)

1. Short press **【▶+/-◀】** button to select “FM Tx.” and enter by pressing **【▶||】** button.
2. Press **【▶+/-◀】** button to select “Setup” or “On/Off”, and press **【▶||】** button to enter.

Setup:

*Select “Setup” mode and short press **【▶||】** button to enter, at this time you can adjust the frequency (from 88.1 to 107.9MHz) by pressing **【▶+/-◀】** button (at intervals of 0.2MHz), then Press **【▶||】** button to save your setup.*

On/Off:

*Select “On/Off” mode and short press **【▶||】** button to enter, then you can select “Off” or “On” mode by pressing **【▶+/-◀】** button.*

*Press **【▶||】** button to save your setup and exit.*

After setting a frequency, you need to adjust the FM frequency of FM tuner, both the frequencies must be the same, then playback the music in the player with FM transmitter function, and the FM tuner can tune in the music within some range.

### **Note:**

1. It is suggested that for better tuning effect you should select void channel.
2. The receiving distance is affected by surrounding environment, like weather, location, etc.



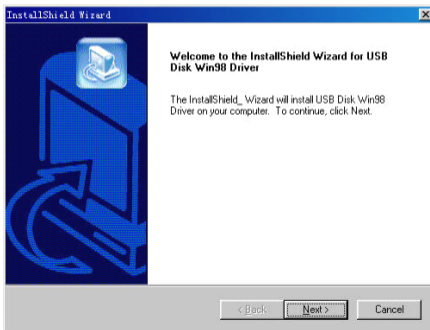
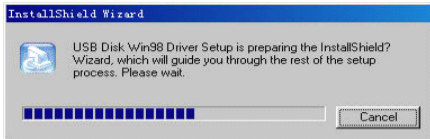
## USB Driver Installation

**Note: Please remove the player from the computer when you install USB Disk Win98 driver in Windows98se Operating system.**

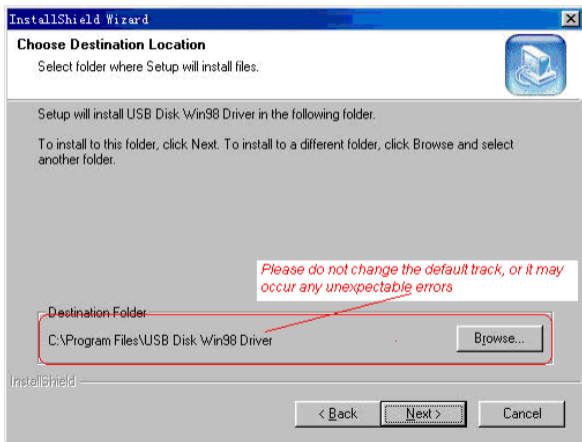
1. Install USB Disk Win98 driver for computer windows98 Operating system

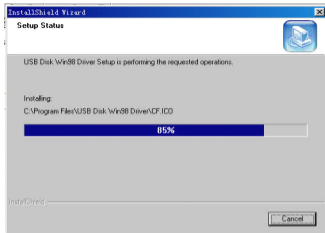
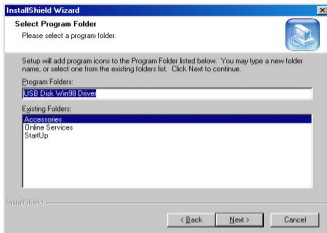
- (1) Put CD disk to CD driver
- (2) Double click the USB Disk Win98 driver to start setup.
- (3) Select installation language and click "OK" to enter into next step (Please select the default language).



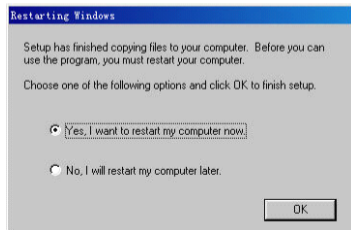
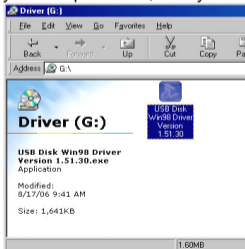


- (4) Click “Next>” to enter into next step.



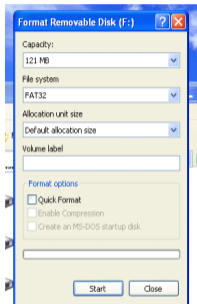
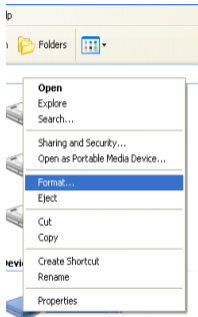


(5) Close the Driver (X:) window, then click “OK” to finish setup process and restart your computer now, then you can use the player.



## 2. Format the player

The player is “FAT” format. If you wish to format it, right click removable disk and choose “Format” mode, then click “Start” to format in operating system. As following pictures show:



### Notice

- Please setup the **HOLD** ► button in “unlock” mode before using the player.
- Attention should be drawn to the environmental aspects of battery disposal.
- Can't identify the sixth and above sixth level of directory.

## Technical Specification

No.	Name	Description
1	Capacity of Flash Memory	Support Micro SD/T-Flash Card, up to 2G; Build-in Flash Memory, up to 8G.
2	USB Interface	USB2.0 (High Speed)
3	LCD Display	2.0 TFT
4	Power supply	Li-Polymer
5	S/N ratio	≥85dB
6	Audio Frequency Range	20Hz – 20kHz
7	EQ	NORMAL, POP, ROCK, CLASSIC, JAZZ, BASS, Custom EQ
8	Decoding Format	MP3 and WMA, MTV, JPG and BMP
9	FM	87.50 ---- 108.00MHz(Normal) Totally support 30 preset stations
10	File System	FAT16, FAT32
11	Operating Temperature	5°C ----35 °C (41 °F---95 °F)
12	Operating Moisture	10%—75%

V7.0

736-MD382I701

